

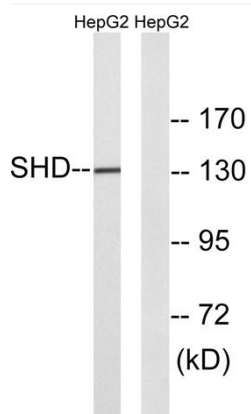


Shd Polyclonal Antibody

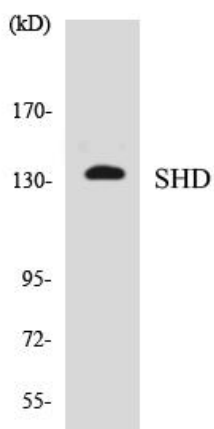
Catalog No	YP-Ab-16250
Isotype	IgG
Reactivity	Human;Rat;Mouse;
Applications	WB;ELISA
Gene Name	SHD
Protein Name	SH2 domain-containing adapter protein D
Immunogen	The antiserum was produced against synthesized peptide derived from human SHD. AA range:141-190
Specificity	Shd Polyclonal Antibody detects endogenous levels of Shd protein.
Formulation	Liquid in PBS containing 50% glycerol, 0.5% BSA and 0.02% sodium azide.
Source	Polyclonal, Rabbit,IgG
Purification	The antibody was affinity-purified from rabbit antiserum by affinity-chromatography using epitope-specific immunogen.
Dilution	Western Blot: 1/500 - 1/2000. ELISA: 1/40000. Not yet tested in other applications.
Concentration	1 mg/ml
Purity	≥90%
Storage Stability	-20°C/1 year
Synonyms	SHD; SH2 domain-containing adapter protein D
Observed Band	130kD
Cell Pathway	
Tissue Specificity	Neuroblastoma,
Function	function:May function as an adapter protein.,PTM:Tyrosine phosphorylated by ABL.,similarity:Contains 1 SH2 domain.,
Background	function:May function as an adapter protein.,PTM:Tyrosine phosphorylated by ABL.,similarity:Contains 1 SH2 domain.,
matters needing attention	Avoid repeated freezing and thawing!
Usage suggestions	This product can be used in immunological reaction related experiments. For more information, please consult technical personnel.



Products Images



Western blot analysis of lysates from HepG2 cells, using SHD Antibody. The lane on the right is blocked with the synthesized peptide.



Western blot analysis of the lysates from HepG2 cells using SHD antibody.